

SCENIC BYWAY

PROJECT PARTNERS

WASHOE COUNTY REGIONAL PARKS
AND OPEN SPACE

775-823-6500 • www.washoecountyparks.com

U.S. FOREST SERVICE
HUMBOLDT-TOIYABE NATIONAL FOREST
CARSON RANGER DISTRICT

775-882-2766 • www.fs.fed.us/r4/htnf/districts/carson.shtml

Funded in part by the Federal Highways Administration

Photos by Paul G. White, Kurt Kuznicki and Loring Larsen

RESOURCE LIST

AMERICAS BYWAYS-NATIONAL SCENIC BYWAYS
(locations and details of the nation's scenic byways)
www.byways.org

INCLINE VILLAGE/CRYSTAL BAY
CONVENTION AND VISITORS BUREAU
(lodging and activities)
www.gotahoenorth.com

NATIONAL RECREATION RESERVATION SERVICE
(Mount Rose Campground Reservations)
www.recreation.gov

NEVADA DEPARTMENT OF TRANSPORTATION
(State scenic byways, road conditions, road construction and emergency assistance)
www.nevadadot.com • dial 511

NEVADA TOURISM
(parks, museums, recreation and cultural activities)
www.travelnevada.com

NEVADA TRAIL MAPS
(trails search, ethics and guidelines and trail information)
www.nvtrailmaps.com

RENO-SPARKS CONVENTION
AND VISITORS AUTHORITY
(trip planning and activities)
www.VisitRenoTahoe.com

SIERRA FRONT RECREATION COALITION
(outdoor recreation and adventure guide)
www.sierrafont.org

TAHOE RIM TRAIL
(trail use, locations, programs, events and volunteering)
www.tahoerimtrail.org



MOUNT ROSE SCENIC BYWAY



DID YOU know?

As you drive towards Mount Rose from Reno, carefully look at the mountaintop and you will see the silhouette of a woman's face gazing skyward. Say hello to the "Rose" of Mount Rose, named after the mountain where she rests her head.



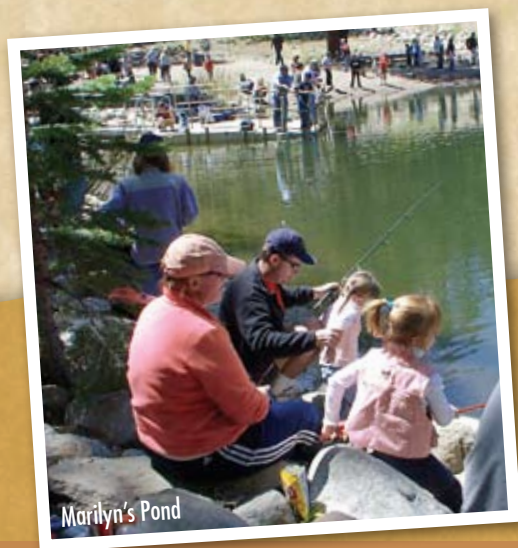
Galena Creek

GALENA CREEK RECREATION AREA

Galena Creek Recreation Area and Visitor Center, a cooperative project with the U.S. Forest Service and Washoe County, is a good place to start your Mount Rose Adventure.

Washoe County's Galena Creek Regional Park is nestled in a forested area on the eastern slope of the Sierra. The park is popular year-round among those who love to hike, fish, picnic, snowshoe or just enjoy some time among the pines. Galena Creek flows through the center of the park. Trailheads provide access to Jones-Whites Creek loop trails, portals to the Mount Rose Wilderness Area.

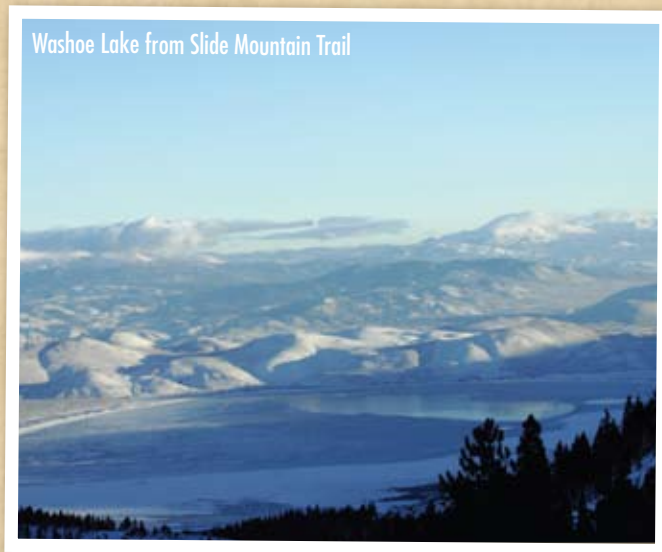
Features of the park include the historical Galena Creek Fish Hatchery, Camp We Ch Me overnight group camping lodge and Marilyn's Pond.



Marilyn's Pond

SLIDE MOUNTAIN TRAILHEAD

A one-mile loop trail from Washoe County's trailhead leads to stunning views of Mount Rose, Slide Mountain, Washoe Valley and Reno.



Washoe Lake from Slide Mountain Trail

MOUNT ROSE WILDERNESS

Mount Rose Wilderness was added to the National Wilderness Preservation System by the U.S. Congress in 1989. It encompasses a rugged high-elevation portion of the Carson Range (a branch off the Sierra Nevada) including 10,776-foot Mount Rose. With its proximity to Reno, Mount Rose is a popular Wilderness Area offering great scenery and a memorable outdoor experience.

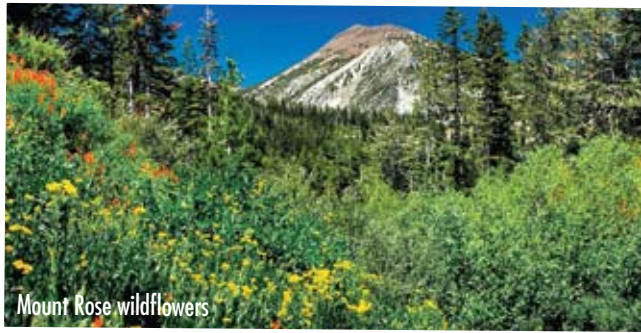
DID YOU KNOW?

Where did Mount Rose get its name? It's not exactly certain — the name came either from early 1800's settler Jacob H. Rose, who built a lumber mill near Franktown, or Rose Hickman, a friend of Washoe City newspaper editor H.S. Ham.

MOUNT ROSE SCENIC BYWAY

MT. ROSE-SKI TAHOE

A variety of historical photos and maps within the main lodge tell how winter recreation evolved around the Mount Rose summit over the last century. Mount Rose was an alternative site for the 1960 Winter Olympics; just in case there was no snow in Squaw Valley.



Mount Rose wildflowers

MOUNT ROSE SUMMIT WELCOME PLAZA

At elevation 9000 feet, the Plaza is located at the highest highway summit maintained year-round in the Sierra Mountains. A series of panels provide local and regional history as well as maps and information.

It provides a trailhead for the Tahoe Rim Trail heading north through the Mount Rose Wilderness. Once in the Wilderness, the Rim Trail reaches its highest point along its 165-mile loop around Lake Tahoe on Relay Peak at 10,166 feet. In addition, the very popular Mount Rose Summit Trail starts here and hikers can climb over 1800 vertical feet in 5.3 miles to windswept Mount Rose Peak at 10,776 feet.



Tahoe Rim Trail

MOUNT ROSE CAMPGROUND

This U.S. Forest Service campground is a wonderful spot to stop and enjoy some time at the top of the Mount Rose Highway Summit. It's the only campground along Mount Rose Highway. Its location near the summit places it at the heart of the scenic byway where there are plenty of opportunities for hiking and other outdoor activities accompanied by views of Lake Tahoe. The campground is only open during summer and early fall due to the high elevation.



Autumn colors near the Mount Rose Campground

DID YOU KNOW?

Tahoe Rim Trail is known as the "ring around the jewel." The trail was completed in 2001 and travels 165 miles along high ridges encircling Lake Tahoe, passing through two states, four national forests and Lake Tahoe Nevada State Park. The trail provides challenging terrain and rewarding scenic vistas from high ridges surrounding Lake Tahoe.



Tahoe Meadows Boardwalk

TAHOE MEADOWS TRAILHEAD

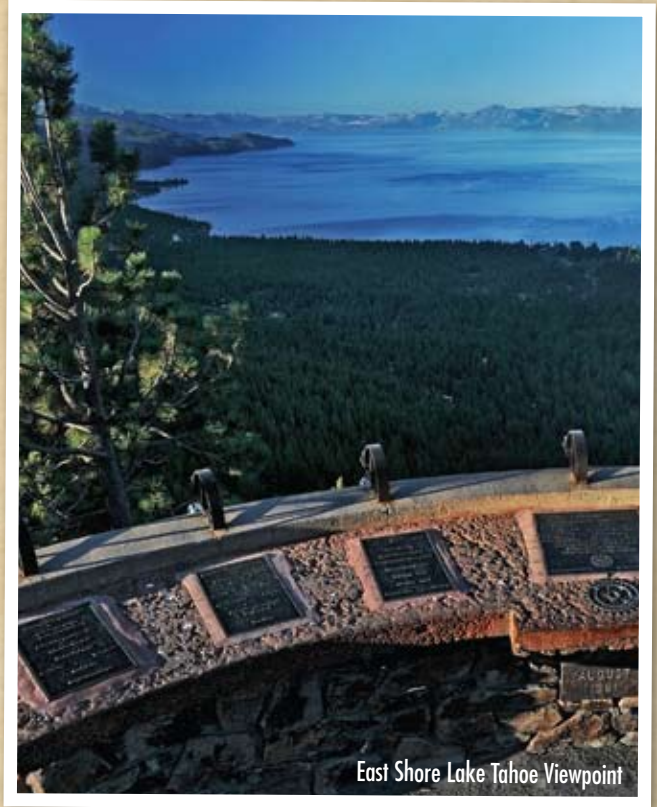
Fans of the TV series *Bonanza* might recognize the scenery and there is nothing like experiencing this high-elevation meadow in person. Long used by the Washoe Indians, the meadow now has an accessible interpretive loop trail that protects the fragile meadow habitat. The trailhead provides access to the Tahoe Rim Trail. During the winter, the meadows are a great place for snowshoeing, sledding and cross country skiing.



Tahoe Meadows

LAKE TAHOE VIEWPOINT

The Nevada Department of Transportation wayside provides one of the best panoramic views of Lake Tahoe. This is a perfect spot to stop and take photographs. Panels point out the various mountain peaks that surround the lake.



East Shore Lake Tahoe Viewpoint

DID YOU know?

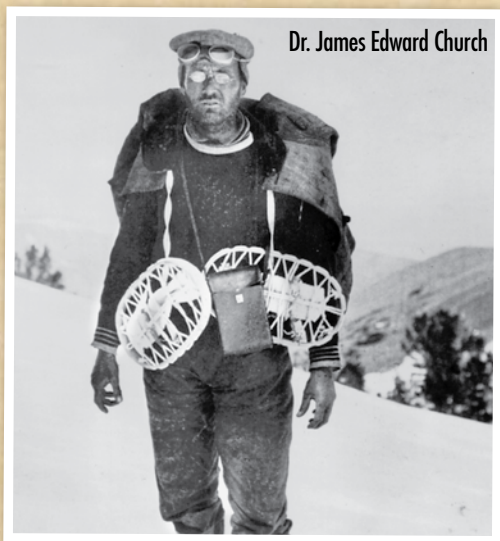
The Mount Rose Highway reaches an elevation of 8,911 feet, the highest pass in the Sierra that is maintained year-round.

MOUNT ROSE

EAST SHORE DRIVE NATIONAL SCENIC BYWAY

As the Mount Rose Scenic Byway comes to an end on the Lake Tahoe side, it intersects with a National Scenic Byway that is considered by many to be “the most beautiful drive in America.” Stretching 28 miles south along SR 28 and Highway 50 from Incline Village to Stateline, the Eastshore Drive Scenic Byway offers breathtaking views of Lake Tahoe along with the surrounding forests and mountains.

The Nevada State Legislature established the state’s Scenic Byways program in 1983 to highlight recreational opportunities, historical and cultural sites, and other amenities for travelers along some of Nevada’s more scenic drives. The Nevada Department of Transportation is the lead agency for the program.



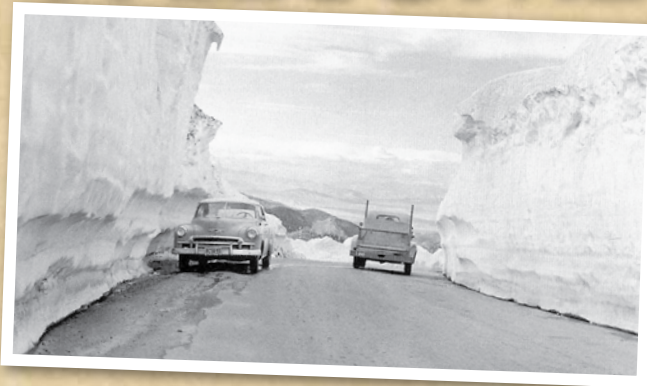
Dr. James Edward Church

DID YOU know?

On New Year’s Day in 1895, Dr. James Edward Church was the first Euro-American to make a winter ascent of Mount Rose. Dr. Church went on to earn an international reputation for his technique to determine the water content of snow and methodology to predict water resources.

MOUNT ROSE SCENIC BYWAY MAP INSIDE →

WELCOME



TO THE Mount Rose SCENIC BYWAY

Whether you begin your adventure from the sage-covered slopes of the eastern Sierra, or from the great blue jewel of the West, Lake Tahoe, the Byway is an exciting ascent over the Sierra Nevada that borders the western edge of the Great Basin.

Along the way, you follow in the footsteps, wagon ruts and horseshoe tracks made by centuries of travelers such as the native Washoe and Paiute peoples, Comstock Lode miners, ranchers, scientists, skiers, hikers and tourists from around the world.

The 22-mile long scenic route follows the Mount Rose Highway, named the "Highway to the Sky" when construction began in the early 1950s. The byway passes primarily through National Forest Lands filled with exceptional beauty. Mountain peaks and valley floors, forests and meadows, a vast array of plants and animals, unusual geology and the dazzling splendor of Lake Tahoe offer the traveler something new behind every switchback.

The U.S. Forest Service and Washoe County created this guide to give you information about the various interpretive sites, overlooks, parks, trails, campgrounds and other resources that will enhance your adventure as you travel Nevada's "Highway to the Sky."



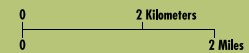
SEE MAP LOCATED IN THE BACK OF THIS PUBLICATION FOR INFORMATION ABOUT THE MOUNT ROSE SCENIC BYWAY POINTS OF DISCOVERY

MOUNT ROSE SCENIC BYWAY POINTS OF DISCOVERY



	Mount Rose Wilderness
	National Forest
BROWNS CREEK TRAILHEAD	
CALLAHAN PARK	
GALENA CREEK RECREATION AREA & VISITOR CENTER	
JONES-WHITES TRAILHEAD	
MOUNT ROSE CAMPGROUND	
MOUNT ROSE SUMMIT WELCOME PLAZA	
LAKE TAHOE VIEWPOINT	
SLIDE MOUNTAIN TRAILHEAD	
TAHOE MEADOWS TRAILHEAD	
THOMAS CREEK TRAILHEAD	
WHITES CREEK TRAILHEAD	

Allowed trail uses vary – Know Before You Go!



CARSON CITY